



## ConeBlast 1/2" by GritSablare: INTERNAL PIPE BLASTING TOOL

### TECHNICAL DETAILS

#### Section 1. Technical Details

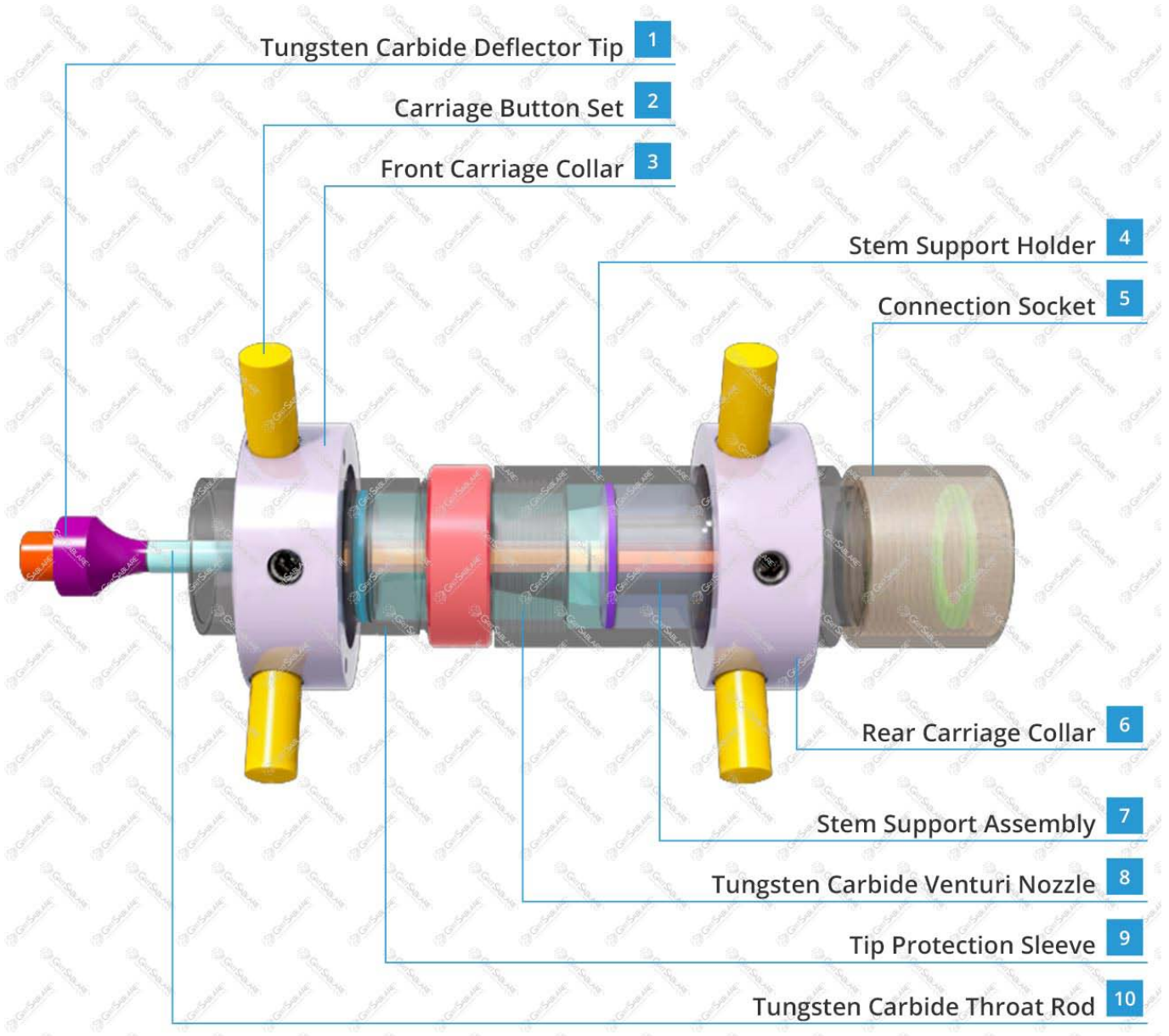
- Internal Pipe Blasting Tool ConeBlast 1/2" by GritSablare is designed to blast the inside surface area of pipes, in sizes ranging from 50mm (2") to 305mm (12") internal diameter.
- The ConeBlast by GritSablare tools feature a built in short Venturi nozzle system, combined with a tungsten carbide deflection tip, which deflects the abrasive into a 360° blast pattern as it exists the end of the ConeBlast assembly.
- ConeBlast by GritSablare devices are available in two (2) sizes, ConeBlast 1/4" and ConeBlast 1/2".
- The ConeBlast 1/2" unit comes complete with a set of centring collars to centre the tool within the pipe.
- A fully adjustable centring carriage is also available as an optional for the ConeBlast 1/2" unit, which is used for pipe diameters between 125 mm (5") and 305 mm (12").
- The wearing parts, such as the deflection tip, stem sleeves and stem support assembly are constructed from tungsten carbide for maximum operating life.



**ConeBlast 1/2" Assembly Shown Fitted in Optional Centring Carriage**

### ConeBlast 1/2"

Minimum Pipe Diameter	50 mm (2")
Maximum Pipe Diameter Using Centring Collars	125 mm (5")
Maximum Pipe Diameter Using Centring Carriage	305 mm (12")
Compressed Air Requirement	340 m <sup>3</sup> / h (200 cfm)

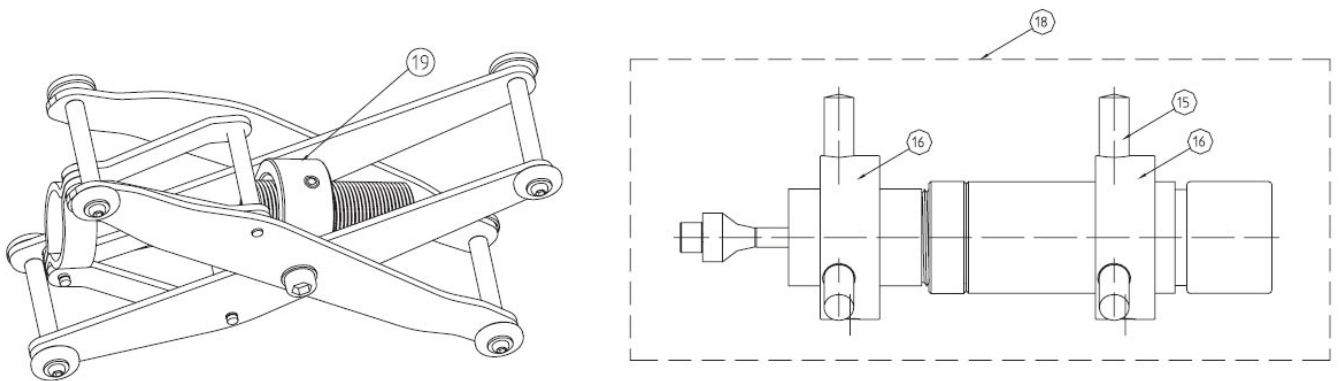
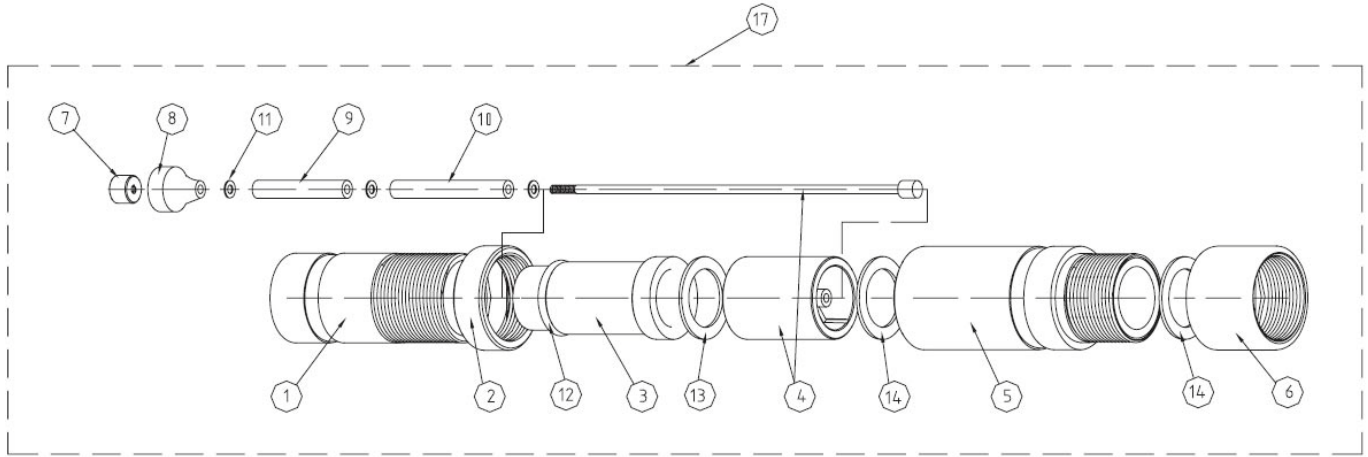


## Section 2. Product Description

1. When receiving the Coneblast 1/2 the main blast tool will be shipped as a complete tool. Within the supply there will also be two outer collar sets that can be attached to the outer body of the ConeBlast 1/2 tool. These collars have three positioning holes around the circumference for fitting of the various "leg"

buttons, there are various lengths of leg buttons (4 sets of 6pcs) to allow for various pipe diameters and for keeping the blast tool central within the pipe or tube being blasted.

- Please do refer to the following line drawing for the following steps:



- Pipe Lance (Client Supply).** The pipe lance is a length of 32mm (1-1/4") pipe that is positioned between the blasting hose and the ConeBlast ½ Tool. It is always recommended that the pipe lance length is the same length as the pipes that are being abrasive blast cleaned.
- The pipe lance provides a solid and straight means of inserting and retracting the ConeBlast ½ Tool through the pipes to be blast cleaned. The pipe lance also provides an efficient means of conveying the abrasive/air mixture from the pressure blast pot to the ConeBlast tool. It is only advisable to utilize blasting hose for inserting and retracting the ConeBlast on smaller ID pipes ranging from 75mm (3") to 125mm (5") if necessary. GritSablare always recommends the use of the correctly sized pipe lance.
- The ConeBlast ½ assembly comes complete with a 32mm (1-1/4") connecting tube (YACBA-PB-0007) in which the pipe lance can be screwed in to. It is recommended that the first 1 meter (3.3ft) of the pipe lance be a heavy wall pipe. Heavy wall pipe will compress the washer (YAC-BA-PB-0018) adequately and provides for increased wear protection of the tools internal components. For subsequent lengths of pipe to cater for the pipe being blast cleaned, the use of standard scheduled pipe is acceptable. To join the pipe lances together to meet the application requirements GritSablare recommends the use of NTC-1 threaded couplings.

6. Note: A pipe lance must be utilized on larger diameter pipes. The use of blasting hoses as the inserting and retracting mechanism will disrupt the abrasive/air mixture flow and will lead to premature damage of the tool components.
7. **Fitting of the Collar & Button Set Carriage.** The ConeBlast ½ Internal Pipe Blaster BAC-BA-PB-0001 is supplied as standard with the full collar & button carriage system. The collar & button system comes complete with front & rear collars and four (4) sets of buttons (six (6) buttons per set). Refer to application table below for button selection for various pipe ID applications. To affix the collars to the tool, select the collar with the larger internal diameter and mount in position over the groove in the deflector pin holder (YAC-BA-PB-0006). The remaining collar, mount in position over the groove in the protection sleeve (YAC-BA-PB-0002). Both collars can then be secured in position by the socket head screws which will tighten in to the locating grooves.

Pipe ID	Carriage Type	Button Length	Compressed Air Volume
50 mm (2")	Tool only	/	200 CFM 5,66 M3/min
75 mm (3")	Tool with collars	/	200 CFM 5,66 M3/min
88 mm (3-1/2")	Collar and Button Set	7,9 mm (5/16")	200 CFM 5,66 M3/min
100 mm (4")	Collar and Button Set	14,3 mm (9/16")	200 CFM 5,66 M3/min
112 mm (4-1/2")	Collar and Button Set	20,6 mm (13/16")	200 CFM 5,66 M3/min
125 mm (5")	Collar and Button Set	27 mm (1-1/16")	200 CFM 5,66 M3/min
125 mm – 305 mm (5") – (12")	Scissor Carriage	/	200 CFM 5,66 M3/min

8. **Fitting of the Adjustable Scissor Carriage for 5" to 12" I.D. Pipes.** The adjustable scissor carriage is supplied as standard with fully threaded tip protection sleeve. To fit the ConeBlast ½ assembly in the adjustable scissor carriage:
9. ... Loosen the knurled lock nut (YAC-BA-PB-0003), remove the protection sleeve (YAC-BA-PB-0002), and replace with the fully threaded tip protection sleeve as supplied with the adjustable scissor carriage.
10. Screw the knurled lock nut (YAC-BA-PB-0003) back onto the fully threaded protection sleeve ensuring that the knurled lock nut is screwed all the way back to the deflector pin holder (YAC-BA-PB-0006).
11. Insert the ConeBlast ½ tool assembly from the rear of the adjustable scissor carriage, ensuring that the tool passes through the central collar and front yoke of the carriage. Position the groove in the deflector pin holder (YAC-BA-PB-0006) with the central collar of on the scissor carriage and firmly secure with the set screw located within the central collar.
12. Screw the remaining knurled lock nut (supplied with the scissor carriage) onto the fully threaded tip protection sleeve.
13. To adjust the scissor centering carriage, turn the knurled lock nut in either a clockwise or anti-clockwise direction for the required pipe ID application.



### ConeBlast 1/2" by GritSablare – Assembly

Item	Code	Description	Quantity
17	BAC-BA-PB-0094	Coneblast 1/2" Tool Assembly Only	1,65 kg
18	BAC-BA-PB-0001	Coneblast 1/2" Tool, Collar & Button Assembly	3,13 kg
19	BAC-BA-PB-0021	Coneblast 1/2" Centering Carriage	1,85 kg

### ConeBlast 1/2" by GritSablare – Parts List

Item	Code	Description	Quantity
1	YAC-BA-PB-0002	Tip Protection Sleeve	1
2	YAC-BA-PB-0003	Knurled Lock Nut	1
3	BAC-BA-PB-0004	1/2" Tungsten Carbide Nozzle	1
4	BAC-BA-PB-0095	Stem Support & Throat Rod Assembly	1
5	YAC-BA-PB-0006	Deflector Pin Holder	1
6	YAC-BA-PB-0007	Connecting Tube	1
7	YAC-BA-PB-0008	Tip Holding Nut	1
8	YAC-BA-PB-0009	Tungsten Carbide Deflector Tip	1
9	YAC-BA-PB-0010	Stem Extension Sleeve	1
10	YAC-BA-PB-0011	Throat Sleeve	1
11	YAC-FN-PB-0177	Flat Washer	3
12	YAC-BS-PB-0005	O-Ring	1
13	YAC-BA-PB-0017	Flat Washer	1
14	YAC-BA-PB-0018	Flat Washer	2
15	BAC-BA-PB-0066	ConeBlast Button 3-1/2" to 5" Full Set	1
16	BAC-BA-PB-0073	Full Collar Set	1

### Section 3. Product Identification

Product name

ConeBlast 1/2" by GritSablare: INTERNAL PIPE BLASTING TOOL

Distributor:

#### GritSablare

Headquarter: 10 Eliza Zamfirescu Leonida Street, Bucharest

Storage & Logistic: Constanța Seaport, Gate 2, SORENA Platform, Constanța, Romania

Phone: (+4) 0722.279.481

Email: comercialgritsablare@gmail.com

Website: www.gritsablare.ro