



AER215 Nuovo Closed Circuit Blaster by GritSablare

TECHNICAL DETAILS

Section 1. Product Features

The AER215 Nuovo Closed Circuit Blaster by GritSablare is a rugged heavy-duty unit suited for both field and shop environments. The trolley-mounted system features a portable blast pot; integral spent media vacuum recovery, multi-cyclone abrasive separation unit and an ultra lightweight ergonomic blast head and handle.

- Air operated – no electrical power required.
- Blasting and recovery confined to the blast head system.
- Dust free blasting in proximity to other operations.
- High efficiency multi-cyclone abrasive separation unit.
- Ultra lightweight ergonomic blast head and handle.
- Trolley-mount with wheels and hose reel for portability, 370 kg.
- Pressure blast feed system.
- Filtered discharge air.

Section 2. Applications:

- Blasting of parts in both shop and field environments.
- Touch up blasting for weld joints in both shop and field environments.
- Spot blasting in dust-sensitive environments.

Section 3. System overview

The AER215 Nuovo Closed Circuit Blaster by GritSablare addresses several deficiencies of current and older closed circuit blast machine designs including the main weakness of extreme operator fatigue due to use of conventional blasting components which are both heavy and bulky for vacuum blasting type applications. This traditionally caused periodic production stoppages due to the blasting operator having to rest much more frequent than normal, and consistently needing to re-balance the blasting head assembly: both in his hands and on his shoulders, resulting in wastage of valuable production time and reduced blasting operator productivity.



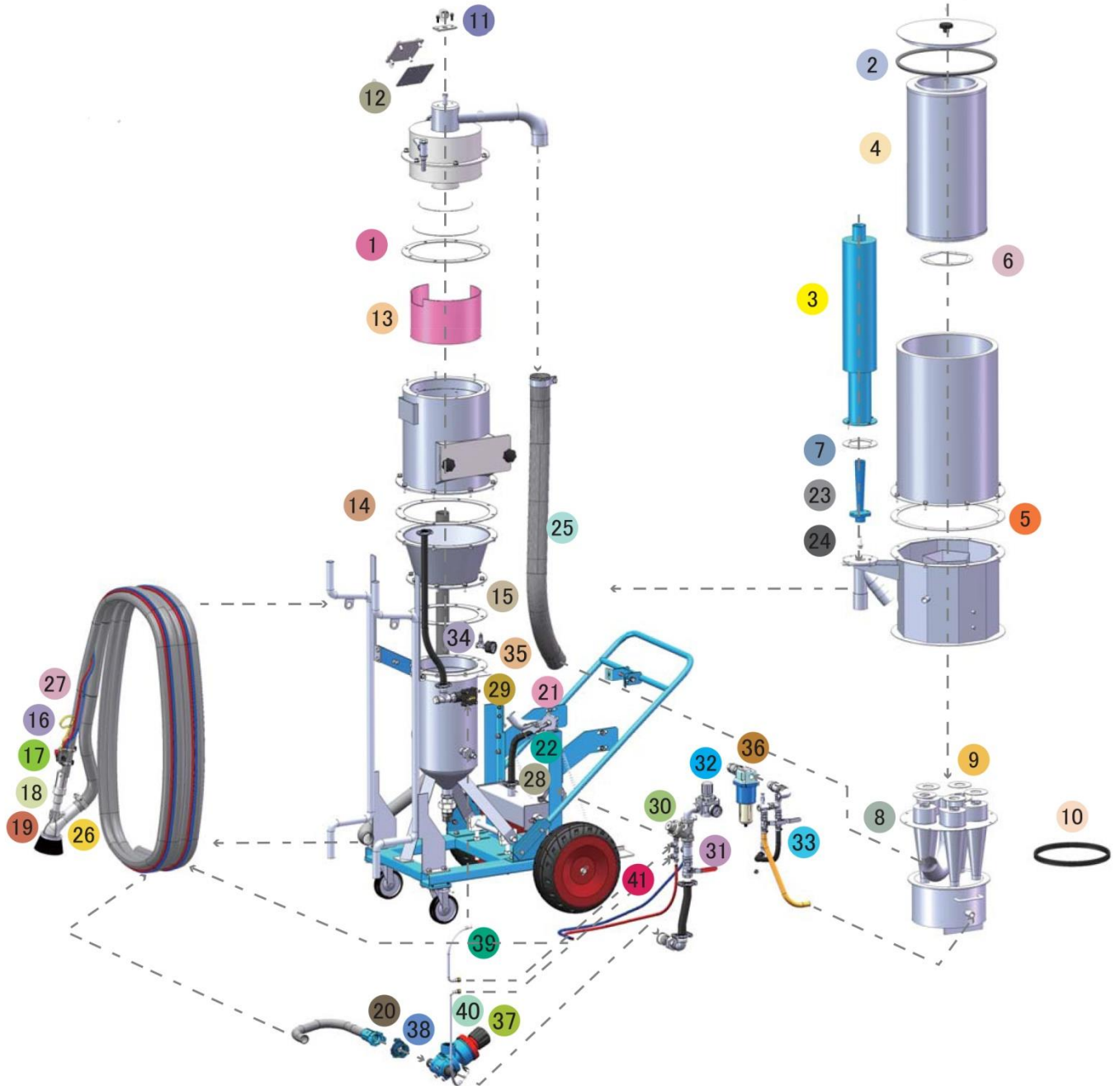
Our system includes innovative features and benefits such are:

- Ultra-efficient "industry's first" integrated multi-pass cyclonic reclaimer system
- Lightweight blast & vacuum recovery head with full venture boron carbide blast nozzle and optional aluminium operator support handle with hose assembly support strap
- Multiple quick fit brush heads to suit different surface profile applications
- "Hands-free" blast activation/de-activation via the QuickStop IIS Remote Control Handle
- Trolley mount featuring multi-directional SSlockable castor wheels for field mobility
- Storage rack for coiling blast and vacuum recovery hose assembly during transport plus storage shelf for tool box and storage hooks for protective face shields and related PPE equipment.
- Fully adjustable first stage abrasive reclaimer system to cater for all abrasive media types
- Corsa II automatic metering valve to eliminate abrasive wastage and slugging during start-up and shut-down process
- Oversize particle catchment screen with viewing port window assembly
- Fully adjustable blast pressure regulator to meet all application requirements
- 14 Litre pressure blast pot with integrated hi-flow remote control deadmans system

Section 4. System Features



Section 5. Part List





Tel: +4 0722 279 481
+4 0725 984 004

Email: comercialgritsablare@gmail.com
Web: www.gritsablare.ro

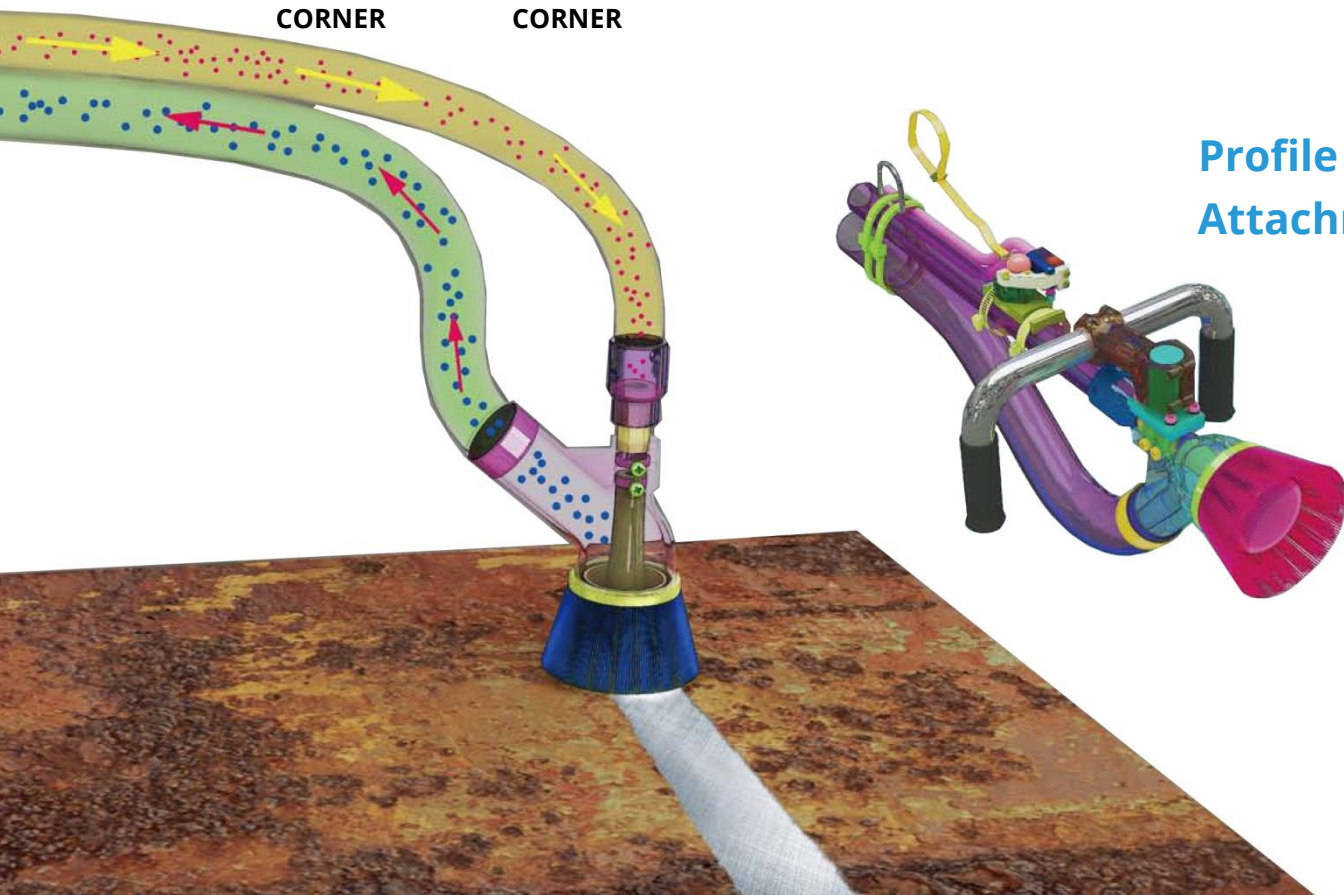
Sustainable Solutions for Blasting & Cleaning

Dedicated Line for Professional Blasting Equipment

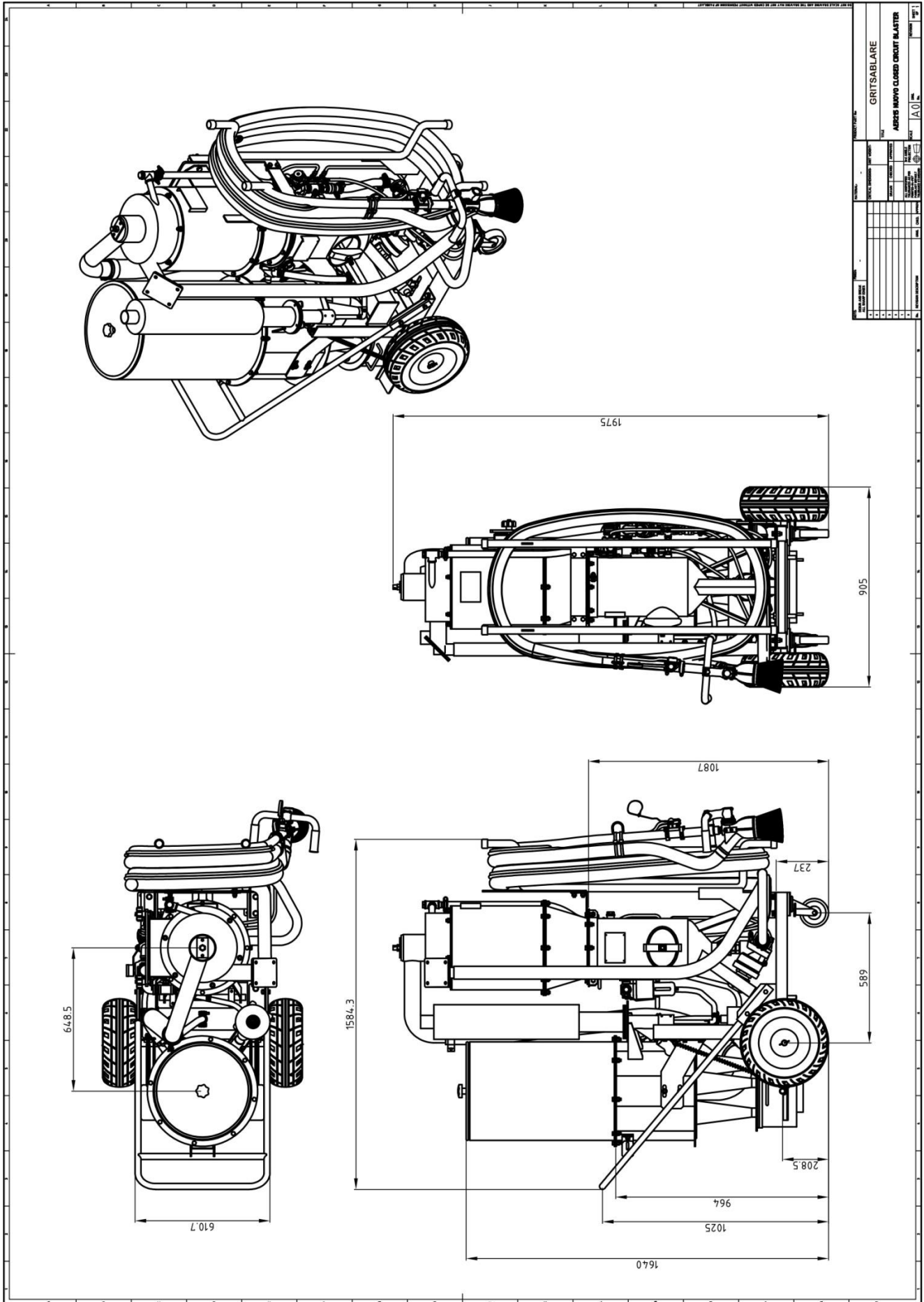
Item	Product Code	Description	Quantity
1	YAC-RV-0182-00	Reclaimer Top Gasket	1
2	YAC-CA-PB-0305	Rubber Door Seal	1.4 m
3	YAC-RV-0153-00	Muffler	1
4	BAC-DF-0025-00	Filter Cartridge -Size 7 Open/Open	1
5	YAC-RV-0156-00	Filter Shell Gasket	1
6	YAC-RV-0150-00	Filter Seal	1
7	YAC-RV-0158-00	Muffler Gasket	1
8	YAC-RV-0143-00	Multi Cyclone Assembly	1
9	YAC-RV-0151-00	Cyclone Gasket	5
10	YAC-CA-PB-0375	Dust Collector Door Seal	1.1 m
11	YAC-RV-0190-00	Gasket	1
12	YAC-RV-0200-00	Wear Plate Gasket	1
13	YAC-RV-0224-00	Wear Plate-Lined	1
14	YAC-RV-0185-00	Reclaimer Gasket	1
15	YAC-RV-0157-00	Pot Gasket	1
16	BAC-RC-0236-04	Quikstop IIS Pneumatic Control Handle	1
17	BAC-NZ-PB-0173	NNH-1/2 Nylon Nozzle Holder	1
18	BAC-NZ-0604-00	Nuovo Nozzle ABN-4	1
19	BAC-RV-PB-0083	AER215 Recovery Head Assy C/W Flat Brush	1
20	BAC-HC-PB-0001	NHC-1 Nylon Hose Coupling	1
21	BAC-DC-PB-0007	Pulse Valve	1
22	YAC-CA-PB-0145	1/4" Blow Off Gun	1
23	YAC-RV-0146-00	Venturi	1
24	YAC-RV-0147-00	Ejector	1
25	YEB-AR-0005-01	Recovery Hose	1
26	YAC-RV-0206-00	Recovery Hose	1
27	BAC-HB-PB-0024	Blast Hose 19 mm X 34 mm X 10 m L2	10 m
28	YAC-RV-0205-00	Pulse Hose	1
29	BAC-RC-PB-0018	Sola 5 NPT Exhaust Valve	1
30	BAC-RC-PB-0275	1" Tandem NPT Valve Assembly	1
31	BAC-PF-PB-0003	25 mm (1") Ball Valve	2
32	BAC-AF-PB-0089	25 mm (1") Pressure Regulator With Gauge	1
33	BAC-PF-PB-0001	13 mm (1/2") Ball Valve	2
34	BAC-PF-PB-0030	6 mm (1/4")-125 PSI Pressure Relief Valve	1
35	BAC-PF-PB-0031	6 mm (1/4") Pressure Gauge - Rear Entry	1
36	BAC-AF-PB-0166	25 mm (1") Port Moisture Separator	1
37	BAC-VA-PB-0117	Corsa II 1-1/4" With Urethane Sleeve	1
38	BAC-HC-PB-0009	NTC-1 Nylon Threaded Pot Coupling	1
39	YAC-RC-0628-00	Connecting Hose	1
40	YAC-RC-0629-00	Connecting Hose	1
41	BAC-RC-0656-00	10 m (33') Twinline Hose Assembly	1

Section 6. System Specification

Compressed Air Requirement	215 m ³ /hr (126 cfm) @ 100psi
Vacuum System	Air Ejector with Exhaust Silencer
Approx. Blasting Speed	5,5 to 6 M ² per / hour
Pressure Blast Pot	Automatic 14 Litre (0,5ft ³) Media Capacity
Blast Nozzle:	6 mm (1/4") Boron Carbide Full Venturi
Blast Hose	19 mm (3/4") I.D. x 10 Meters (33 ft) Premium Light Wall
Vacuum Recovery Hose	50 mm (2") I.D. x 10 Meters (33 ft) Spring Coil Reinforced
Abrasive Separation System	Fully Adjustable Cyclone Reclaimer with Internal Abrasive Resistant Lining
2 nd Stage Separation System	Multi-Pass Cyclonic Reclaimer
Dust Collector	Reverse Pulse Jet Dust Collection System
Cartridge Filter Area	23 m ²
Remote Control Handle	Hands Free Drop Ball & Strap QuickStop IIS
Remote Control System	OSHA Compliant
Abrasive Metering Control	Corsa II Automatic Plunger Type
Transportability	Mobile Site Transportation Skid
Vacuum Brush Attachments	Flat / Inside Corner / Outside Corner / Curved
Vacuum Head Handling	Ergonomic Vacuum Head Support Handle Assembly (Optional)
Operator Hose Support	Clip & Release Padded Shoulder Hose Support Strap Assembly (Optional)



Profile Brush Attachments





Tel: +4 0722 279 481
+4 0725 984 004

Email: comercialgritsablare@gmail.com
Web: www.gritsablare.ro

Sustainable Solutions for Blasting & Cleaning

Dedicated Line for Professional Blasting Equipment

Section 7. Product Identification

Product name AER215 Nuovo Closed Circuit Blaster by GritSablare

Distributor: GritSablare

Headquarter: 10 Eliza Zamfirescu Leonida Street, Bucharest

Storage & Constanța Seaport, Gate 2, SORENA Platform,
Logistic: Constanța, Romania

Phone: (+4) 0722.279.481

Email: comercialgritsablare@gmail.com

Website: www.gritsablare.ro
